

# Farming is More Than Food

A lesson based on the book, The Soil Neighborhood, by Dan Yunk and Steve Swaffar.



*This book was financed by the Kansas Farm Bureau Foundation for Agriculture on behalf of Kansas Farm Bureau, The Voice of Agriculture. It was written to educate young people, parents and teachers about where our food comes from.*

*America's food supply is safe, affordable and abundant but also vastly misunderstood by the consuming public. It is the intention of Kansas Farm Bureau to improve the public's knowledge about the importance of farming and ranching in our quality of life.*

## **BACKGROUND INFORMATION:**

After reading The Soil Neighborhood, we have learned that because of soil, farmers are able to harvest crops that will provide us with things we use everyday. People know that farmers provide us with the food we eat, but the crops they grow and the livestock they raise are used in more than just food. They provide us with clothing, crayons, fuel, soap, and much more! Let's discover that farming is more than food!

## **ACTIVITY:**

Point out the four commodity groups in the four corners—beef, soybeans, corn, and wheat. Each student will soon be given a value-added product that comes from one of these commodities. Instruct students that when you say 'farming,' they will go to the commodity that their product comes from.

Pass out the value-added products to students. After each student has been given a product, say 'farming' to cue students to classify their commodities.

\*NOTE: If you pass out the products before instructions are given, the students will be preoccupied with their products and will not listen to the directions.

*The teacher may opt to tell students how many value-added products are from each commodity or may decide to allow students to classify the products without this guideline.*

## **LEVEL:**

Pre-K – 2<sup>nd</sup>

## **SUBJECTS/STANDARDS:**

K-2 SCIENCE AS INQUIRY – The student will experience science as *full inquiry*.

Benchmark 1: The student will be involved in activities that develop skills necessary to conduct scientific inquiries.

## **Indicator:**

The student...

2. *classifies* and arranges groups of objects by a variety of properties, one property at a time.

## **ACTIVITY DESCRIPTION:**

Students will classify value-added products that come from commodities—beef, soybeans, corn, and wheat—that are grown in Kansas.

## **STUDENT LEARNING**

### **OUTCOMES:**

Students will classify value-added products into categories based on their commodity source.

## **ESTIMATED**

**TEACHING TIME:** 20 minutes

After students are at the different commodities, go to each commodity group and tell them how many, but not which ones, are correct. Then, as a group, the students must decide which product(s) need to be classified elsewhere. For advanced students, continue this process until all products are in the correct commodity group.

After the products are correctly classified, explain how the commodity is used in each product. For example, corn starch is used in aspirin; corn syrup is in pop; etc.

Pass out the Farming is More Than Food handout. As the teacher reads each of the products aloud, students should circle the word if they have ever used that product. After reading through the list, instruct students to count how many products they circled.

Instruct students to stand if they circled 1 product. All students should stand. Then, students should remain standing if they circled 5 products, then 10, 15, and so on, until appropriate. Students should grasp the concept that they use many products from agriculture other than just food!

By classifying these value-added products, we have discovered that farming is more than food! Because of soil, farmers harvest crops and raise animals so that we are able to enjoy food and many other products, too!

### **ADDITIONAL RESOURCES:**

For more information regarding specific information on commodities:

#### **Soybeans**

Kansas Soybean Association: [www.kansassoybeans.com](http://www.kansassoybeans.com)

American Soybean Association: [www.soygrowers.com](http://www.soygrowers.com)

#### **Wheat**

Kansas Wheat: [www.wheatonline.com](http://www.wheatonline.com)

National Association of Wheat Growers: [www.wheatworld.org](http://www.wheatworld.org)

#### **Corn**

Kansas Corn: [www.ksgains.com/corn](http://www.ksgains.com/corn)

National Corn Growers Association: [www.ncga.com](http://www.ncga.com)

#### **Beef**

Kansas Beef Council: [www.kansasbeef.org](http://www.kansasbeef.org)

National Cattlemen's Beef Association: [www.beef.org](http://www.beef.org)

### **MATERIALS NEEDED:**

- Value-Added Products:  
Pop; Chewing Gum;  
Aspirin; Marshmallows;  
Jell-O; Glue; Crayons;  
Candle; Body Wash;  
Pasta; Bread;  
Biodegradable Golf Tees;  
\*May opt to use  
additional products listed  
on handout.
- Commodity Cards, printed  
on cardstock and/or  
laminated
- Jewelry bags of corn,  
soybeans, and wheat
- Posters for corn, soy-  
beans, wheat, and beef
- Copies of Farming is More  
Than Food handout

### **PREPARE AHEAD:**

Gather the 12 products listed above. If desired, gather enough products so that each student has a product. Another option is to divide students into groups that have the same 12 products. \*\*\*NOTE: To prevent students from ingesting the products, use empty packages.\*\*\*

Print the Commodity Cards on cardstock and laminate, if desired. Attach jewelry bags of wheat, corn, and soybeans to the right side of the crop cards.

On 4 large pieces of poster board or construction paper, write each commodity name. Post these with the corresponding commodity card in the four corners.

Make copies of the handout.

# Farming is More Than Food

Name \_\_\_\_\_

Farmers provide us with the food we eat, but the crops they grow and the livestock they raise are used in more than just food.

Did you know these products come from farming?



## CORN:

Pop  
Chewing Gum  
Aspirin  
Batteries  
Car Fuel  
Shoe Polish  
Rubber Tires  
Toothpaste

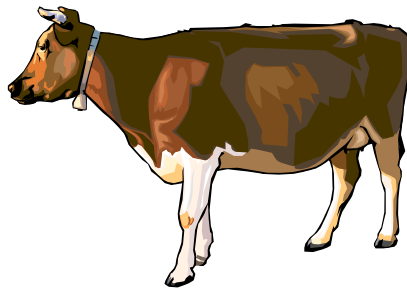


## SOYBEANS:

Soy Bio-diesel  
Crayons  
Candle  
Body Wash  
Paints  
Ink  
Cosmetics  
Plastics

## BEEF:

Jell-O  
Glue  
Shoes  
Luggage  
Shampoo  
Doggie Chews  
Bandage Strips  
Marshmallows



## WHEAT:

Pasta  
Bread  
Charcoal  
Paper  
Plastic Bags  
Packing Peanuts  
Biodegradable Golf Tees  
Straw Particle Board (wood)

