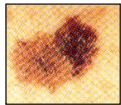


## The ABCD's of Skin Cancer:

- **Asymmetry** ~ one half of area does not match the other half
- **Border** ~ the edges are uneven or ragged
- **Color** ~ the color is uneven with more than one shade or color present
- **Diameter** ~ any change in size, or if the size is larger than a pencil eraser
- **Sensation** ~ there are changes in the way it feels (itching, dryness, scaling, lumpy, swollen or tender)

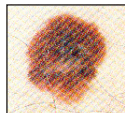
*Asymmetrical*



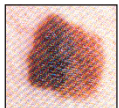
*Border Irregular*



*Color Varied*



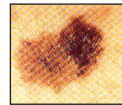
*Diameter > 6 mm*



## The ABCD's of Skin Cancer:

- **Asymmetry** ~ one half of area does not match the other half
- **Border** ~ the edges are uneven or ragged
- **Color** ~ the color is uneven with more than one shade or color present
- **Diameter** ~ any change in size, or if the size is larger than a pencil eraser
- **Sensation** ~ there are changes in the way it feels (itching, dryness, scaling, lumpy, swollen or tender)

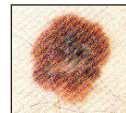
*Asymmetrical*



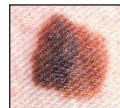
*Border Irregular*



*Color Varied*



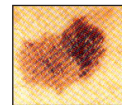
*Diameter > 6 mm*



## The ABCD's of Skin Cancer:

- **Asymmetry** ~ one half of area does not match the other half
- **Border** ~ the edges are uneven or ragged
- **Color** ~ the color is uneven with more than one shade or color present
- **Diameter** ~ any change in size, or if the size is larger than a pencil eraser
- **Sensation** ~ there are changes in the way it feels (itching, dryness, scaling, lumpy, swollen or tender)

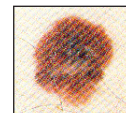
*Asymmetrical*



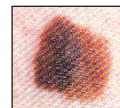
*Border Irregular*



*Color Varied*



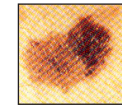
*Diameter > 6 mm*



## The ABCD's of Skin Cancer:

- **Asymmetry** ~ one half of area does not match the other half
- **Border** ~ the edges are uneven or ragged
- **Color** ~ the color is uneven with more than one shade or color present
- **Diameter** ~ any change in size, or if the size is larger than a pencil eraser
- **Sensation** ~ there are changes in the way it feels (itching, dryness, scaling, lumpy, swollen or tender)

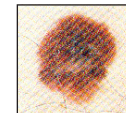
*Asymmetrical*



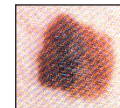
*Border Irregular*



*Color Varied*



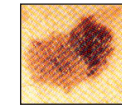
*Diameter > 6 mm*



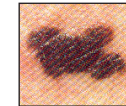
## The ABCD's of Skin Cancer:

- **Asymmetry** ~ one half of area does not match the other half
- **Border** ~ the edges are uneven or ragged
- **Color** ~ the color is uneven with more than one shade or color present
- **Diameter** ~ any change in size, or if the size is larger than a pencil eraser
- **Sensation** ~ there are changes in the way it feels (itching, dryness, scaling, lumpy, swollen or tender)

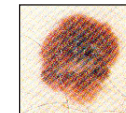
*Asymmetrical*



*Border Irregular*



*Color Varied*



*Diameter > 6 mm*

