

# APPLY IT TO AG!

Your Directions to Ag Connections

# LET'S LEARN ABOUT DAIRY COWS

Do you know that milk is not all the same? That is because each dairy cow provides a milk different in taste, texture and content. The three breeds of dairy cows most used for milk in the United States are Jerseys, Guernseys and Holsteins. Other popular dairy cow breeds are brown Swiss, Ayrshire, Red & White and Milking Shorthorns. Let's go over some basic facts about each breed.



## Jersey Dairy Cows

- The small island of Jersey, off the coast of France, is where you will find ancestors of the Jersey cows who were first introduced to America in 1850.
- Jerseys are smaller cows compared to other breeds and usually weigh around 900 pounds. While they may be small, they produce quantity milk with the highest butterfat and protein content of all dairy breeds.
- This “pretty” breed is known for having a small head and shoulders with a nice honey-brown colored coat.



## Guernsey Dairy Cows

- Guernseys came to the United States from Guernsey, a small island off the coast of France. They first arrived in New York by boat in 1840.
- Guernsey's have golden colored coats with white patches and believe it or not, even their milk is golden in color!
- These medium-sized cows usually weigh around 1,200 pounds and are known for living longer than other dairy cow breeds.



## Holstein Dairy Cows

- First arrived in Boston Massachusetts by ship in 1852 from the Netherlands.
- Weighing an average of 1,500 pounds, Holsteins are one of the largest breeds of dairy cattle.
- Holsteins are white cows with big black spots.
- Holsteins make more milk than any other breed, producing about 10 gallons of milk per day. Their milk is lower in butterfat and protein than other breeds.

# APPLY IT TO AG!

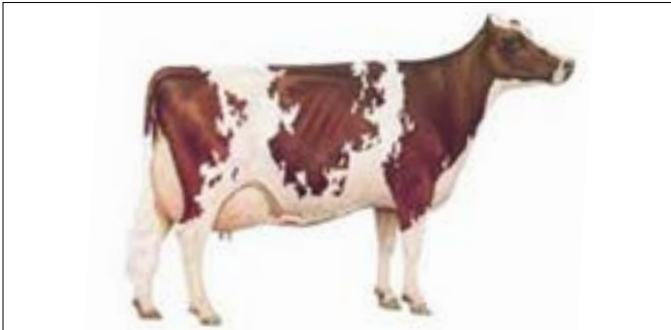
Your Directions to Ag Connections

# LET'S LEARN ABOUT DAIRY COWS



## Brown Swiss Dairy Cows

- These dairy cows originated in Switzerland and are one of the oldest dairy breeds in the world.
- Swiss cows first arrived in Massachusetts in 1869 and do well in both hot and cold climates.
- Swiss cows produce milk high in lactose (also known as milk sugar) which makes it perfect for making cheese!
- Often reaching a weight of close to 1,500 pounds, they also have strong legs and feet.



## Ayrshire Dairy Cows

- Came to the U.S. from Scotland in 1822 arriving in Connecticut by ship.
- These red and white speckled cows usually weigh in at around 1,200 pounds. Their strong feet and legs help them withstand difficult conditions.
- Ayrshires are known for producing milk used for high-quality butter and cheese.



## Red & White Dairy Cows

- In 1964, the Red & White became the most recently recognized breed of Dairy Cow.
- These dairy cows have genetics from several different breeds of dairy cows but most of them are Holstein cattle.
- Red & Whites weigh up to 1,400 pounds and produce milk that is low in butterfat and protein



## Milking Shorthorns

- Milking Shorthorns are one of the oldest recognized breeds of Dairy Cows.
- In 1783, the first Shorthorns entered the United States.
- These docile cattle live a long, productive life and are known for being easier to care for than other breeds.